



HINDAZA **ENGINEERING** **BIM**

GROWTH IS NEVER BY MERE CHANCE;
IT IS THE RESULT OF FORCES WORKING
TOGETHER...

WHO WE ARE

A Specialized firm in buildings design technology and consulting services established in 2011

Provides complete BIM solutions integrated with a broad range of consulting services supported with talented knowledgeable team of Architectural, Structural, Electrical and Mechanical Engineers for building and infrastructure projects

In addition to providing inspiring, sustainable, compatible and cost controlled designs to ensure successful completion of projects based on our clients' requirements, budget and time



WHAT WE DO

We provide strategic advisory services that will improve the performance of companies and their employees, in addition to engineering services and technical support for consultant, contractors, owners, project managers.

And hire of BIM software to coordinate between engineering discipline to find problems and work to solve it.



Enhanced and implement the use of Hi-tech and state of the art solutions in our designs through adoption of **Building Information Modeling technology (BIM)**

Our technical support engineers specialize in BIM software certified professional, and have a wide experience of working with BIM



MISSION

Provide to our clients with an innovative solutions that emphasis on quality, cost, workability, durability and timeline respect.



VISION

Enhanced and implement the use of Hi-tech and state of the art solutions in our designs through adoption of (BIM) technology.



VALUES

Integrity, trust, respect and belief in everything we do.

We provide to our clients with complete engineering services extended to cover various areas of practices



Owners & Investors

- ❖ Preliminary project studies
- ❖ Supervision
- ❖ Client representation
- ❖ Design management & coordination
- ❖ Facility management



Project Management

- ❖ Project scheduling
- ❖ Estimating and value engineering
- ❖ Coordination of construction with building management
- ❖ Coordination with contractors



Consultants

- ❖ Full and partial design services
- ❖ BIM implementation for consultant scope
- ❖ Technical support for construction documentation



Contractors

- ❖ Leaser scan model for existing conditions
- ❖ BIM implementation for contractor scope
- ❖ 4D & 5D simulation.
- ❖ Clash free model
- ❖ Generate shop drawings

Client Services



Creating coordination models, integrating models to one model, participate to coordination meetings, assist the stakeholders to organize and operate BIM team for project.

creating 4D & 5D simulation models, point layouts, laser scanning and point clouds for the project.

Establishing plans and processes, training, monitoring, reviewing and approving models and related data submitted by contractors for enhancing operations and facilities management through 6D BIM.

Integrating as-built single models into unique construction as-built models.

Engineering Services



Establishing employer information requirements EIR and BIM requirements for requests for proposals.



Establishing contract documents to develop BIM for clients, as well as contract compliance tracking and approving deliverables.



Establishing BIM execution plan, multidisciplinary coordination collaboration workflows and standards.



Advising on the evaluation and selection of the proper common data environment CDE and software packages and providing set up and training services.

BIM Strategic Services

OUR PROJECTS

❖ HEALTH CARE

❖ EDUCATIONAL

❖ RENOVATION

❖ LANDSCAPE

❖ RESIDENTIAL

❖ COMMERCIAL

❖ INFRASTRUCTURE

❖ TECHNICAL BUILDINGS

Jordan | Saudi Arabia | Qatar | Iraq | Azerbaijan | Russia



HEALTH CARE PROJECTS

Al-Kindi Hospital

Amman, Jordan

Architect of record: Dar Al Omran

Client: Hiba Contracting Company

Scope: MEP Shop drawings modeling LOD 350

The project is the design
of a general hospital 130 bed
with 4 basements, ground floor
and 5 floors

MEP Quantities from Models.

Structural models LOD 300

Architectural model LOD 350

for finish & quantities

Area: 40,000 sqm



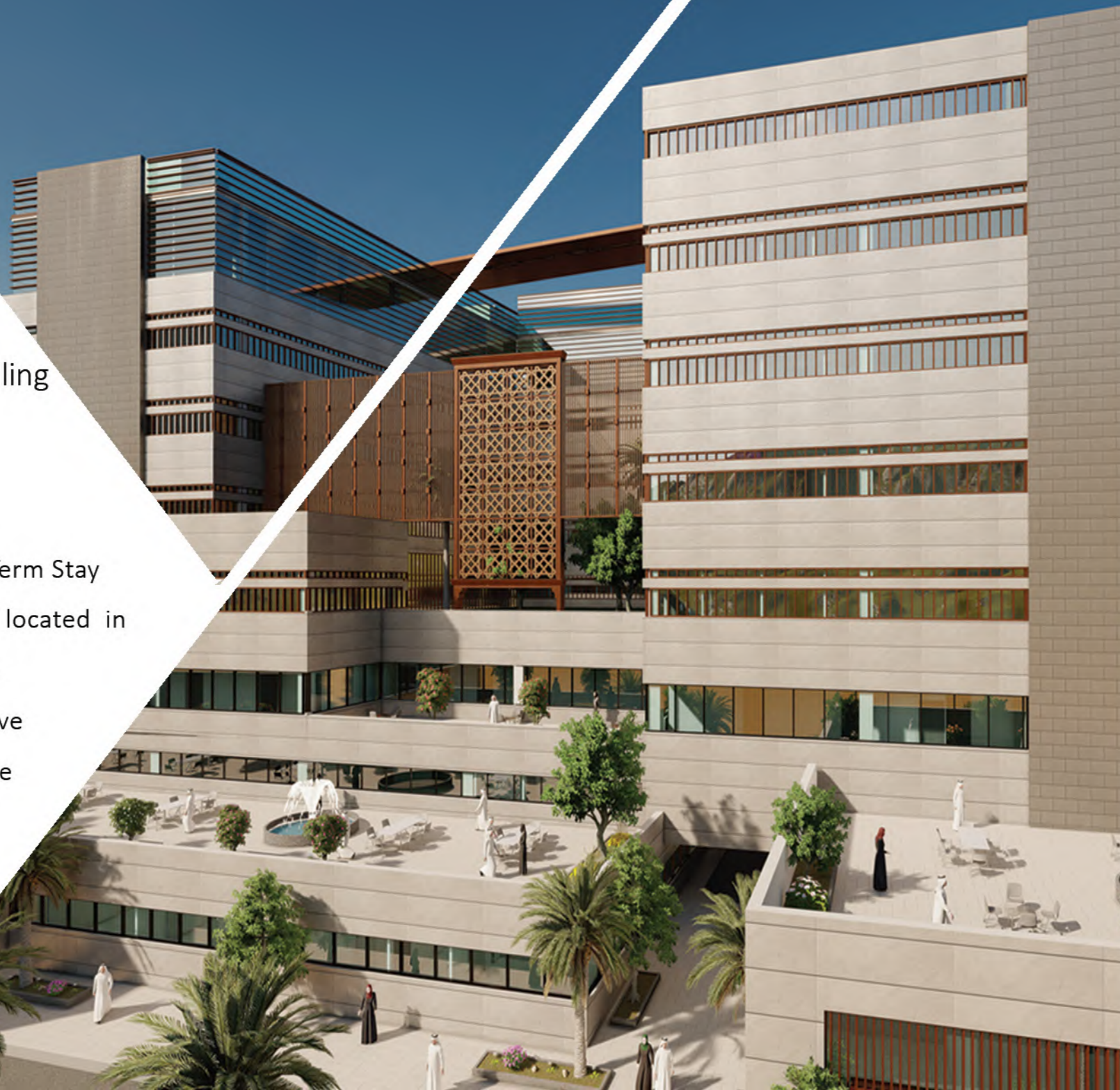
LTC Murjan Hospital

Jeddah, KSA

Scope: Architectural modelling up to LOD 300

Area: 38,000 sqm

The proposed Al Murjan Long Term Stay Hospital is a 168 bed hospital, located in Jeddah, KSA, consisting of High dependency care beds, palliative care beds, partially chronic care beds and rehabilitative / pre-discharge beds, spread over various floors of the facility.



Al Iman Hospital

Riyadh-KSA

Scope: MEP model up LOD 350 & Shop drawings
Architectural & structural model up to LOD 200 for coordination

Area: 40,000 sqm

Al Iman general hospital is a public hospital located Riyadh, providing outstanding medical services through a wide range of specialties. The project is a multi-story building with an almost total height of 30 m and a capacity of 215 beds.



Makkah Polyclinics

Makkah, KSA

Scope: Prepare Architectural, Structural, & MEP models up to LOD 500.

Area: 20,000 sqm

IMC Makkah Polyclinic will introduce a new concept to the city based on the limited availability of high-end healthcare providers.



Basma Hospital

Irbid, Jordan

Architect of record: Dar Al Omran

Scope: Architectural model up to LOD 350 for accurate BOQ

Area: 85,122 sqm

The original design which was completed on 2013, the hospital was to accommodate the number of 400 beds expandable to 600 beds. Consists of 9 floors, including 4 basement levels and mezzanine. The Architect have developed the new design in way to have the most attractive building and best functions matching with international Healthcare



Al-Taif Hospital

Al-Taif, KSA

Architect of record: EDGE

Scope: Structural model, Specs & BOQ

Area: 80,000 sqm

The design has been awarded the Dubai building healthcare 2015 Award "Best hospital of the future"



Jazan University Innovation & Entrepreneur Center Building

Jazan, KSA

Architect of record: EDGE

Scope: Structure design model LOD 350 for construction and Coordination

Area: 60,000 sqm



Al-Madina Hospital

Al-Madina, KSA

Scope: MEP shop drawings

Area: 12,600 sqm

One of the leading general hospitals in the KSA, with many sectors, including pediatrics, pulmonology, and anesthesiology. As of February 2016, the hospital has equipped itself with 300 beds and on October 2017, new patient wards have been officially opened



Physicians Hospital

Jeddah-KSA

Scope: BIM Modeling up to LOD 300

Area: 40,000 sqm

Physicians Hospital project is 40,000 sqm located in Jeddah Saudi Arabia.

The project is 15 floors (2 basements , 11 floors roof and upper roof). Our team worked on the architectural model LOD 300 and generating IFC drawings



Prince Salman Hospital

Makkah, KSA

Scope: model the MEP up to LOD350,& generate the

shop drawings Model the architectural & structural

up to LOD 200 for coordination

Prince Salman hospital is with total

built-up area of 50,000 m² and

a capacity of 200 beds.



Abdali Medical Center

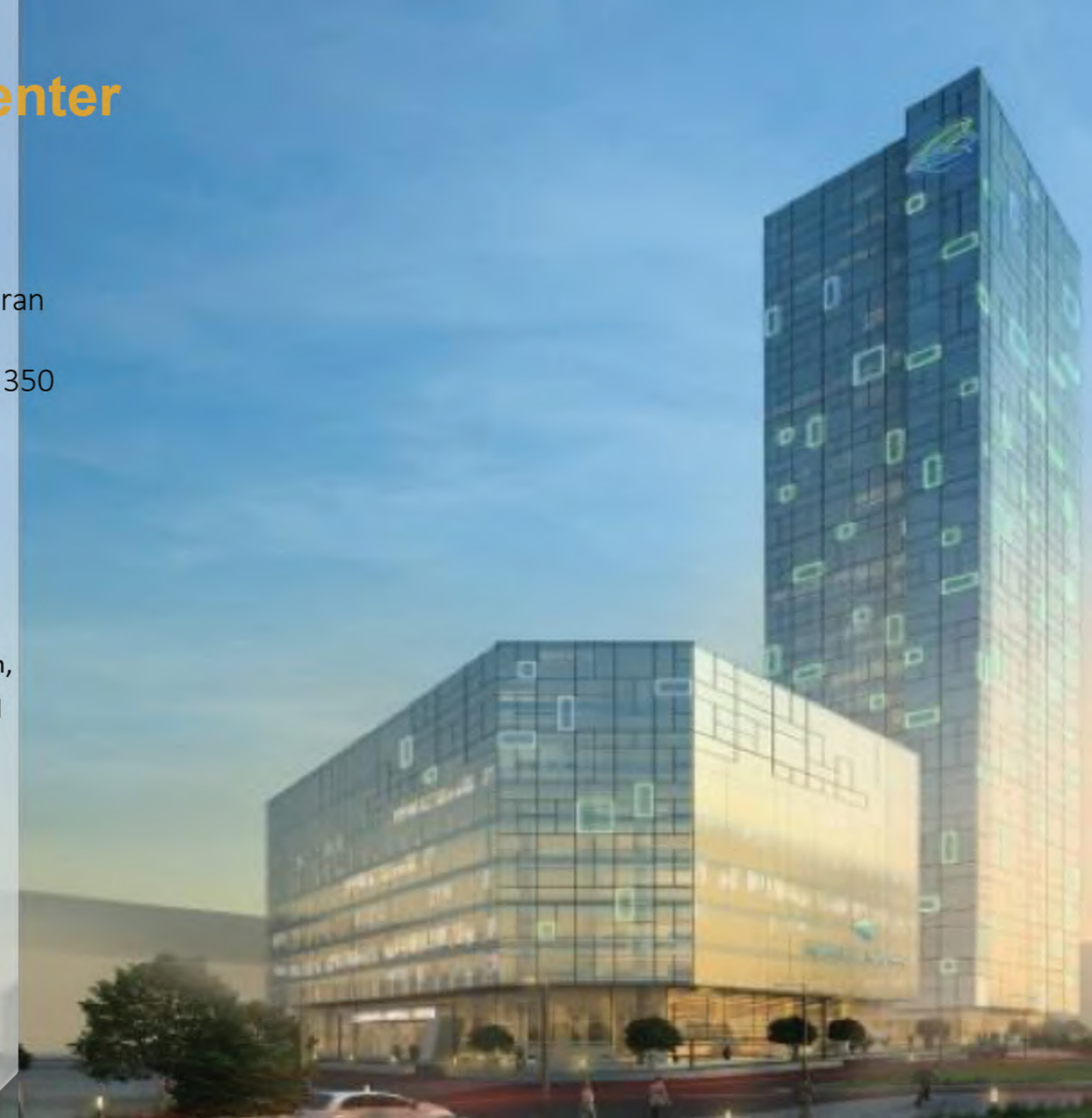
Amman, Jordan

Architect of Record: Dar Al-Omran

Scope: Prepare MEP model LOD 350

Area : Basement one 5000 sqm

ACH is considered as one of the most reputable high end facility in the region, consists of around 200 Beds, a Hospital which will provide all the essential healthcare services offering it in a distinctive healthcare facility and professional staff. The project site is located in Abdali district, one of the most well-known and luxury trade and services zones in Jordan





EDUCATIONAL

PROJECTS

Amman Academy Theatre

Amman, Jordan

Architect of record: Dar Al-Handasah

Client: Arab Contracting Company CO (ACCC)

Scope: MEP model LOD 350 and shop drawings, Architectural & structural model for coordination.

Area: 3,000 sqm



AMMAN
ACADEMY
THEATRE

Aqaba Sport City

Aqaba, Jordan

Architect of record: Dar Al-Omran

Area: 285,500 sqm

Scope: Site & infrastructure services up to LOD 300



Aqaba Sport City



LANDSCAPE & Infrastructure PROJECTS

WADI HANIFAH PARK SPINE CORRIDOR INFRASTRUCTURE

Diriyah Gate ,Riyadh ,KSA

Scope: Infrastructure, Coordination with existing works & Landscape works

The Wadi Hanifah Park is an extensive 235 ha (2,359,406 m²) green belt on the western and southern sides of the Diriyah gate portfolio development and creating a much needed 'green lung' for the residents of the city of Riyadh.

Within the Wadi Hanifah Park, is a 10 km Spine Road and Infrastructure corridor that connects the various sub-districts within the park to the adjacent portfolio.

El-Emara Intersection

Iraq

Full clever leaf interchange which connect city center with al Al bityrah city. 35 m clear span/1900mm

Double Reinforced Columns Cast In Situ Piles,
Diameter 1.2m, Depth 35m

El-Mousel Intersection

Iraq

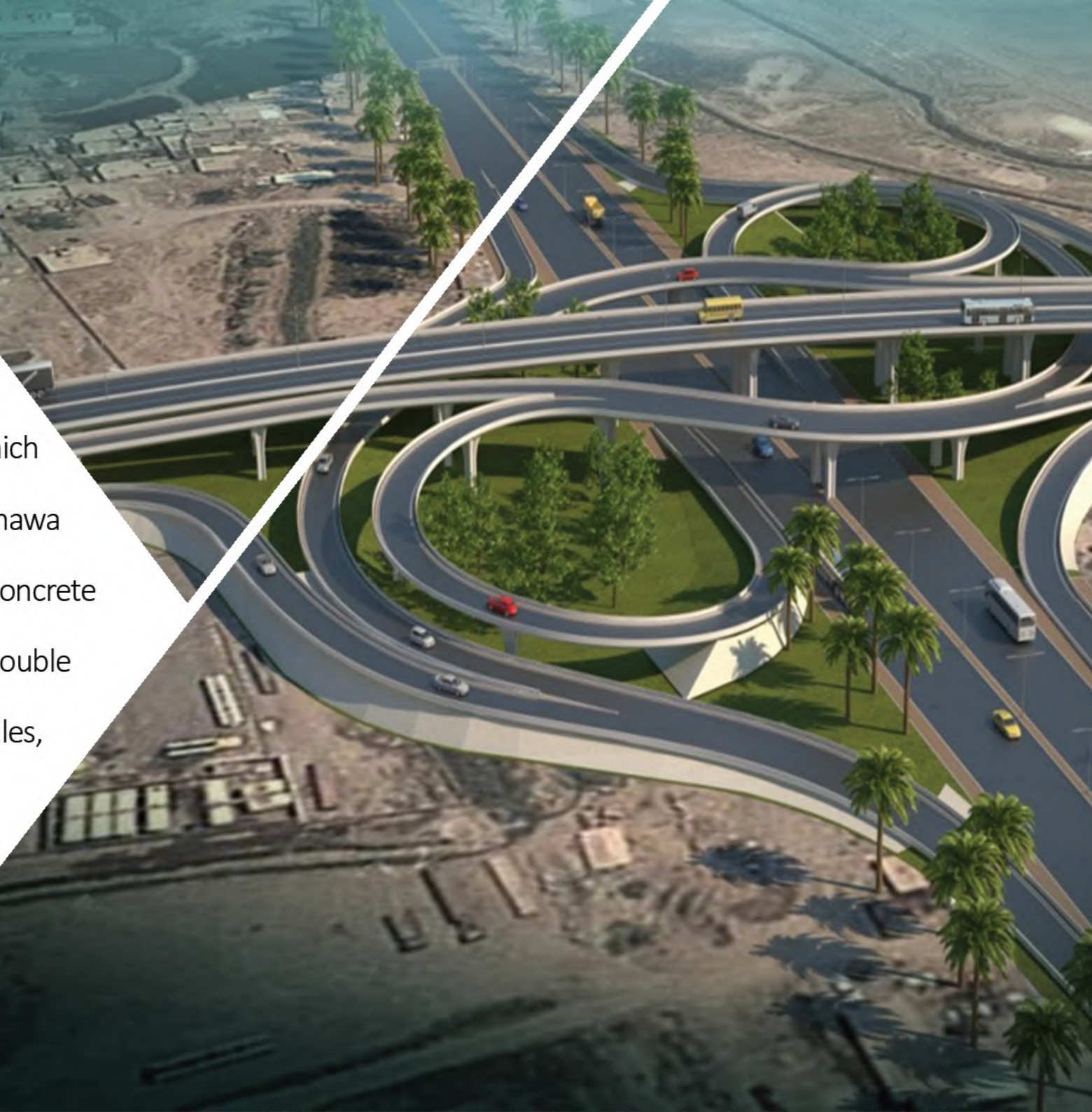
Grade separated interchange with four fly over bridges and underpass which connect Hay Aden with Hay al noor , Al shimali park with Erbil, Hay al snaya with Erbil.

Span: 35 m clear span/1900mm

Al-Naserya Intersection

Iraq

Double clever leaf interchange which connect Sook al shyookh with Semawa and Kut with Basarh. Reinforced Concrete 35 m clear span/1900mm Double Reinforced Columns Cast In Situ Piles, Diameter 1.2m, Depth 35m.



Al-Semamwa Intersection

Iraq

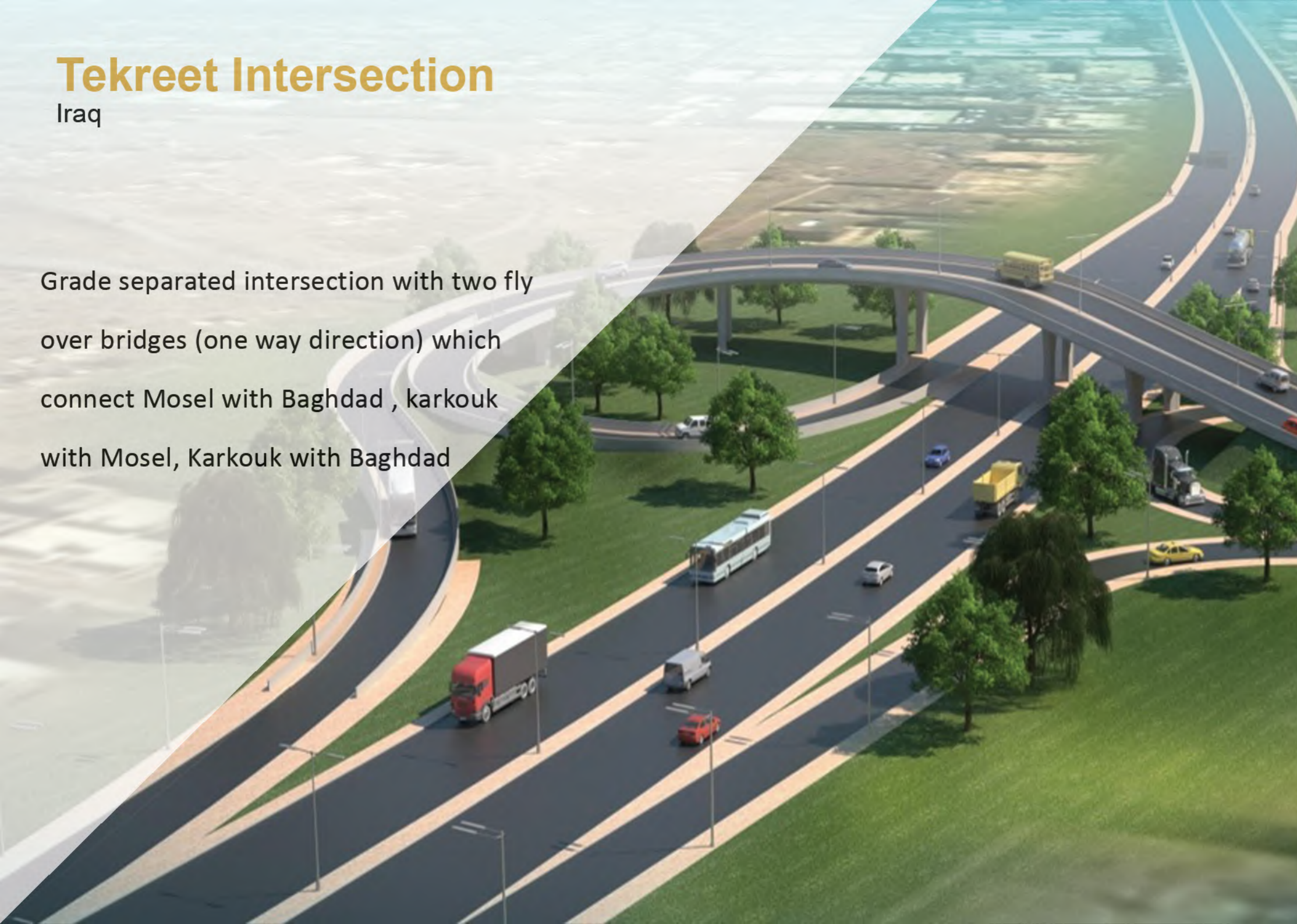
Grade separated intersection with three Fly over bridges (two way directions) which connect 3 main regions with each other City center with Al karaj al mowhad, Al hawza elmya with al karaj al mowhad, Baghdad with Al nasyirah.



Tekreet Intersection

Iraq

Grade separated intersection with two fly over bridges (one way direction) which connect Mosel with Baghdad , karkouk with Mosel, Karkouk with Baghdad



Al-Karama Intersection

Iraq

Grade separated intersections two fly over bridges (one way direction) and underpass (two way direction), which connect Al Kut with city centre, Al masher'h with city center
35 m clear span/
1900mm



RENOVATION PROJECTS

Crowne Plaza Petra Resort

Petra, Jordan

Architect of Record: AL-Nasser Partner

Client: Arab Construction & Contracting (ACCC)

Area: 18,000 sqm

Scope:

Renovation for Architectural, Structural and MEP services,
Create models up to LOD 350 Generate shop drawings for all services

The Crowne Plaza Petra, situated in a UNESCO world heritage site, it is a renovation project where there are an existing facilities have been built in 1980s, and that was the main challenge, in addition to the an existing tunnel with more than 400m long.

COMMERCIAL PROJECTS

Housing Bank
Amman, Jordan

Architect of Record: Arabtech Jardaneh

Client: El-Conord Contracting

Area: 78,800 sqm

Scope: Architectural model up to LOD 300

The client's intention was to build iconic new headquarters in the heart of the Shmeisani district in Amman. Arabtech Jardaneh delivered the striking design shown in background which consists of 7 floors above ground housing the main banking services as well as executive offices and management facilities, in addition to 1 Sub-Ground or level housing services and 3 Basement parking levels.

King Faisal Air Academy

KSA

More than 25 building with different functions like Satellite Flightline Sunshade,
Aircraft Wash Hanger

Scope:

Generate MEP model up to LOD 400 and Shop drawings

Area: 95,000 sqm



Jeddah South Container Terminal Upgrade

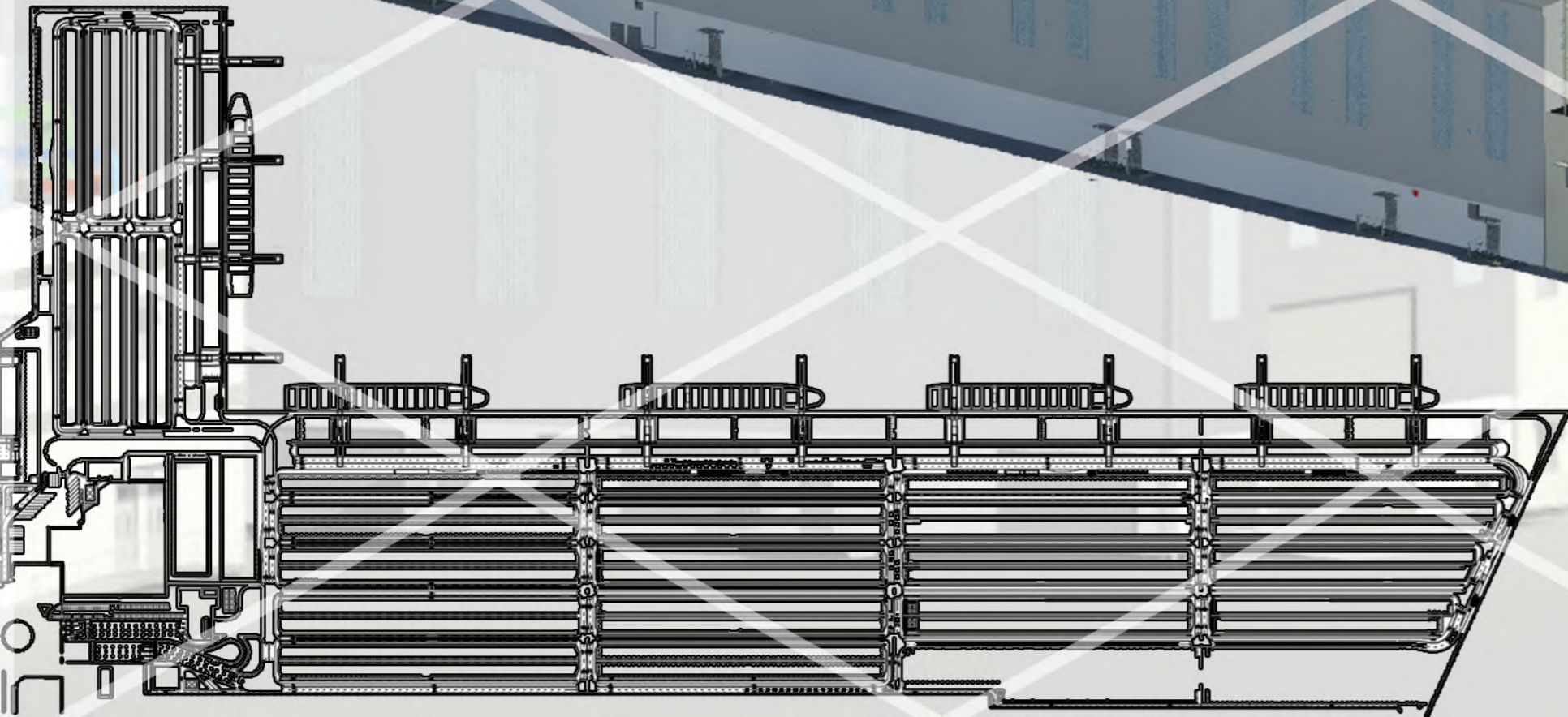
Jeddah-KSA

Scope:

Prepare Structural & MEP model LOD 350 and SD for buildings (Amenities, Workshop, Main substation, & Quay-Side Substation)

Area: 18,000 sqm

It is part of the existing Jeddah Islamic Port- a crucial link in the world's busy east-west trade routes through the Red Sea and catering to a rich domestic cargo base. The terminal has been operated by DP World middle east limited.





Aqaba Cruise Terminal

Aqaba-Jordan

Scope: Low current shop drawings with coordination with other MEP works, work with data center located in this project for different parties (Abu Dhabi port, Custom, Public Security Directorate & General Intelligence Directorate)

Area: 3,500 sqm

It will be the first facility to be developed by AD Ports Group in Jordan and its first cruise facility outside of the United Arab Emirates.

The new terminal will serve as a gateway in the Port of Aqaba that will receive cruise ships passengers visiting the Red Sea, in addition to serving as a major attraction for the residents of Aqaba with a wide range of tourism, commercial, and entertainment services.





RESIDENTIAL PROJECTS

Al-Rayyan Palace

Qatar

Scope: MEP design using revit
LOD 300

Area: 34,000 sqm

Rayyan Palace with its sense of majesty where the most beautiful project we have been working on. our role was limited to design wide range of MEP services that purpose different spaces with different functions.

Mr. Abdul Al-Aziz Villa

Jeddah-KSA

Scope: MEP and structural design services

Area: 1,800 sqm



Imad Qourah Private Villa

Amman, Jordan

Area: 1,800 sqm

Scope : Architectural, Structural and MEP design with LOD 300



Hamza Khair Villa

Amman, Jordan

Area: 1,800 sqm

Scope : Architectural, Structural and MEP design with LOD 300





Technical Buildings

ASIBEX-Can Factory

Iraq

Scope:

Prepare MEP model LOD 350 and SD

Area: 18,000 sqm

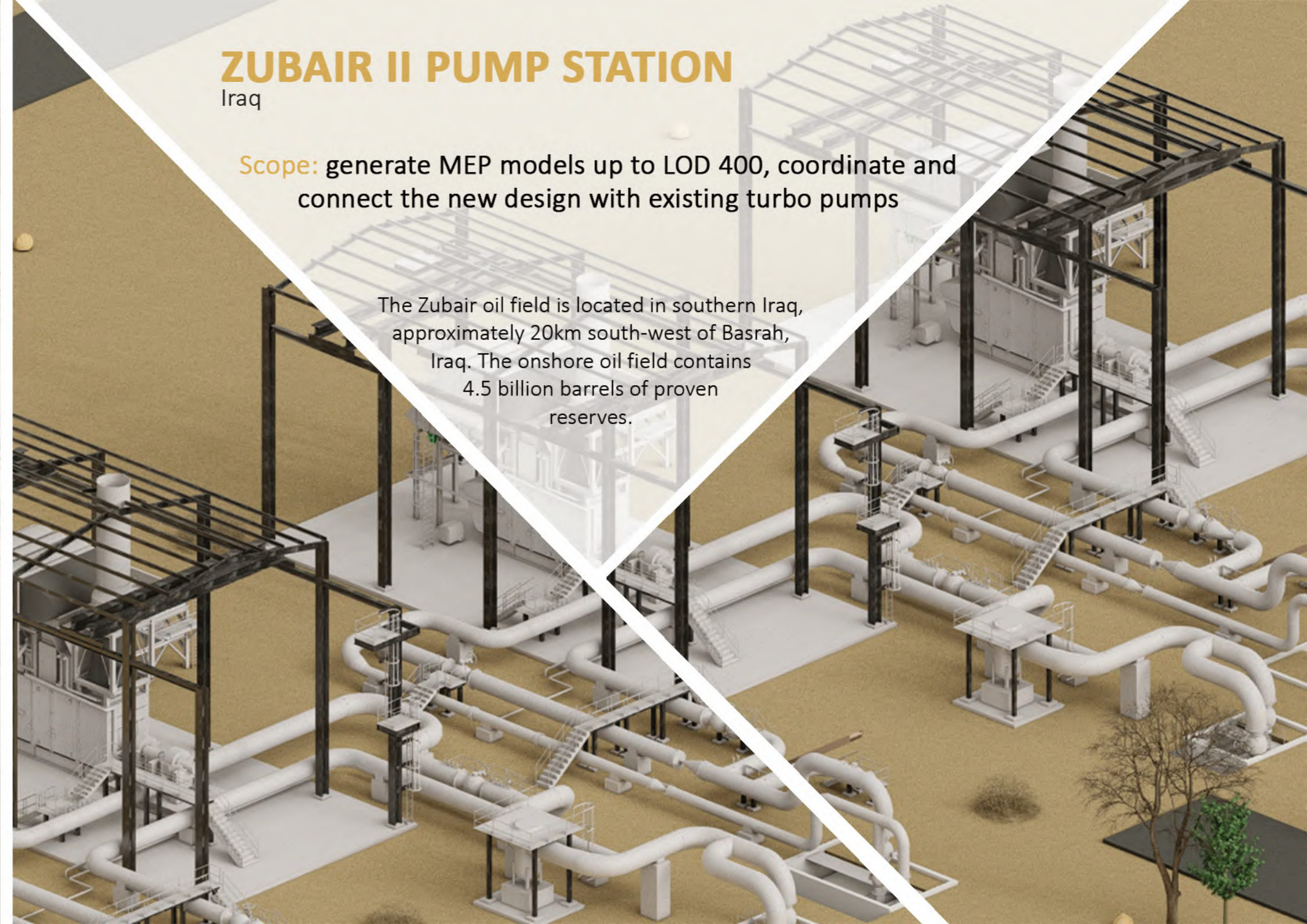
This project has a different typology where it is a factory for cans, our role was to design the production lines with all their MEP services in form of Revit model (LOD up to 350) to extract all shop drawings in intelligent way.

ZUBAIR II PUMP STATION

Iraq

Scope: generate MEP models up to LOD 400, coordinate and connect the new design with existing turbo pumps

The Zubair oil field is located in southern Iraq, approximately 20km south-west of Basrah, Iraq. The onshore oil field contains 4.5 billion barrels of proven reserves.



Technical Building

Russia

Scope:

Generate model for Architectural Structural and MEP up to LOD 350 and generate the shop drawings from models

AREA: 3,000 sqm



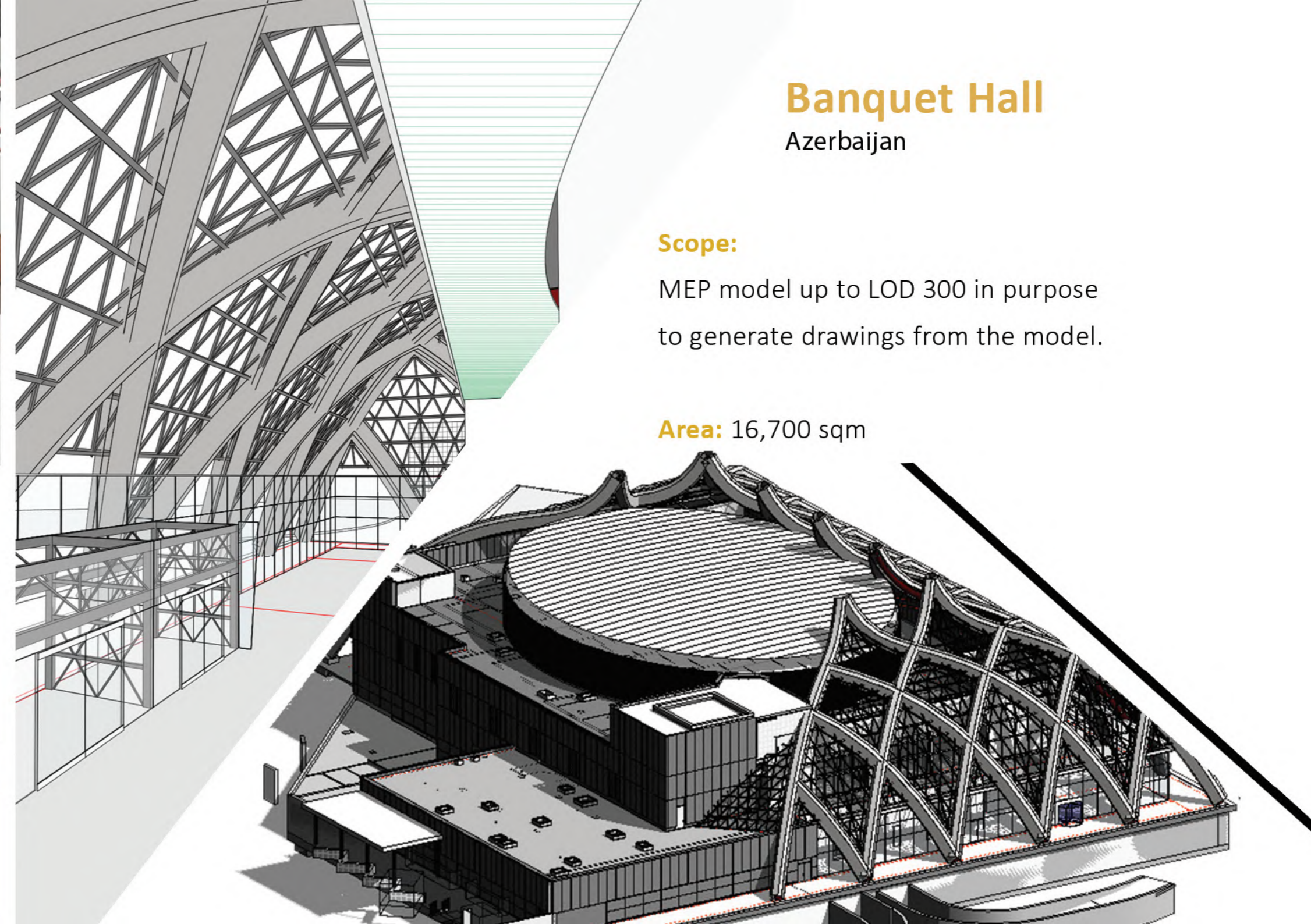
Banquet Hall

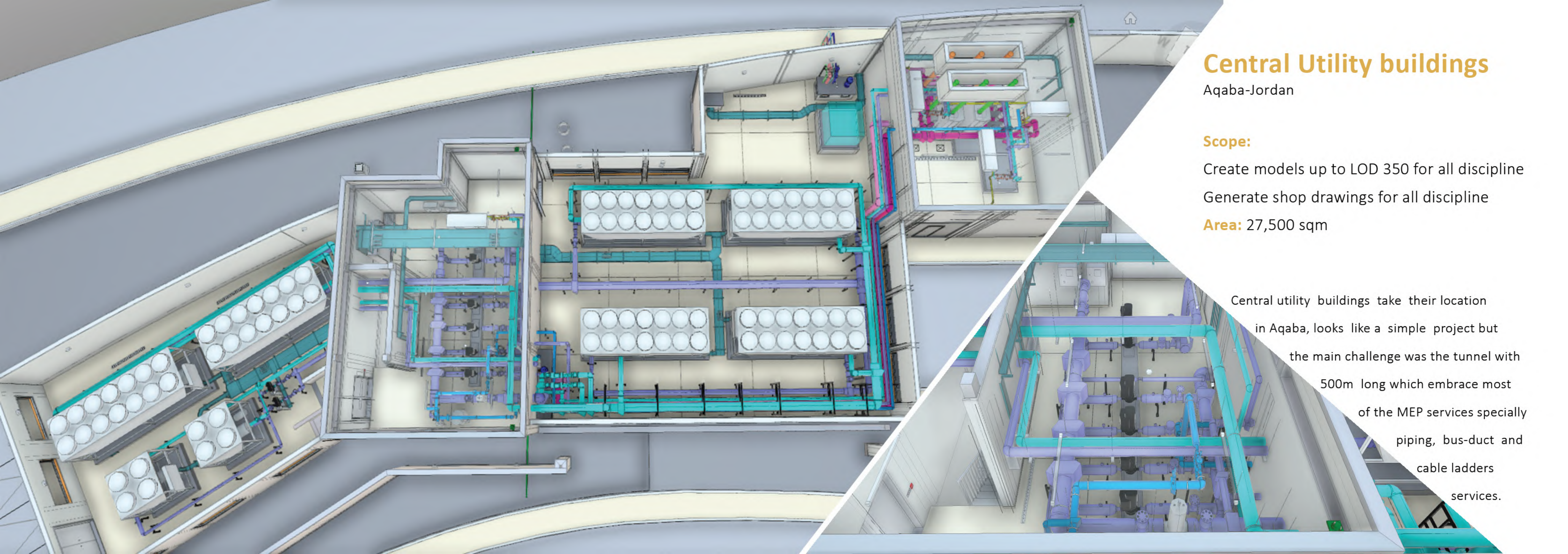
Azerbaijan

Scope:

MEP model up to LOD 300 in purpose to generate drawings from the model.

Area: 16,700 sqm





Central Utility buildings

Aqaba-Jordan

Scope:

Create models up to LOD 350 for all discipline

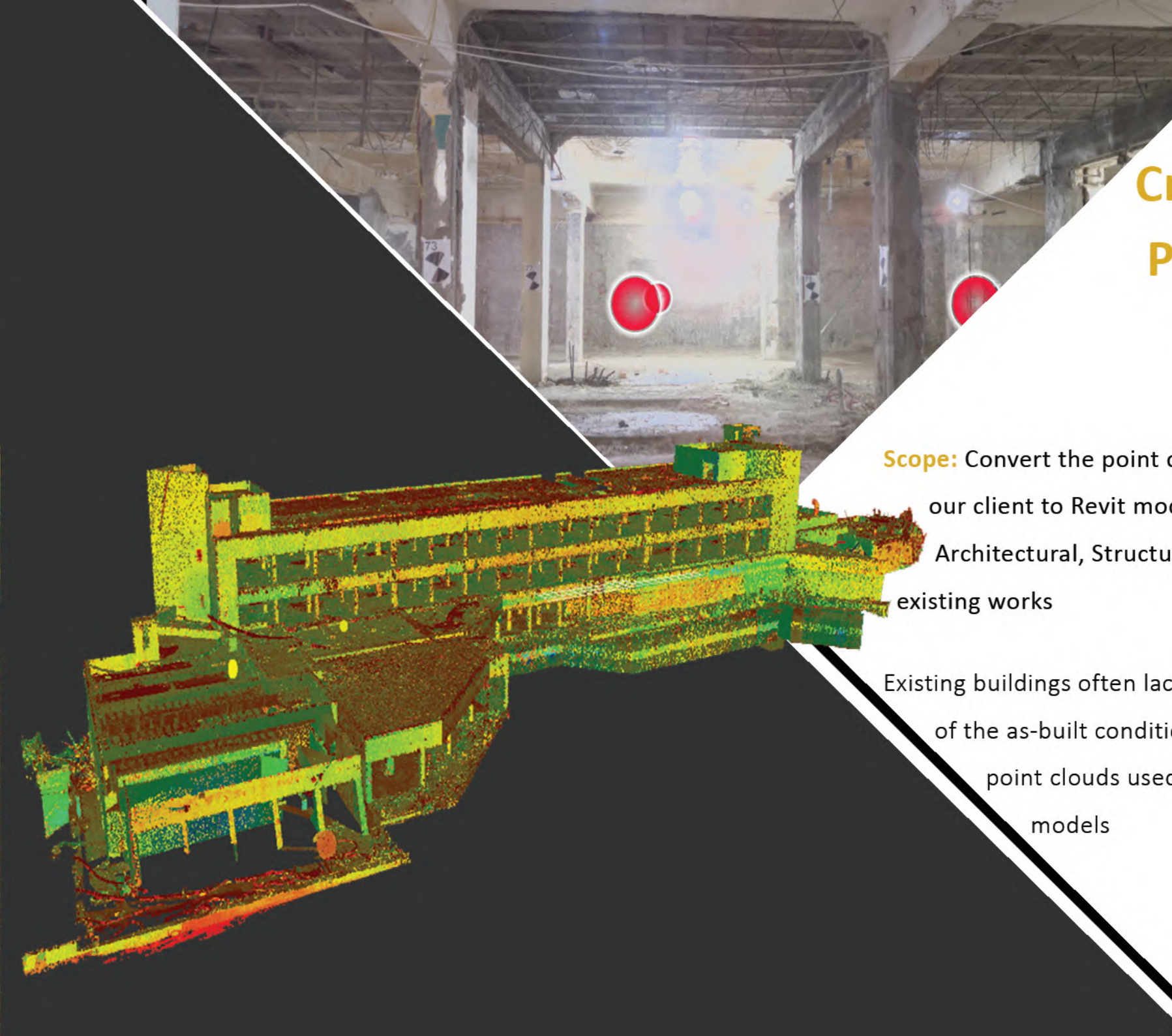
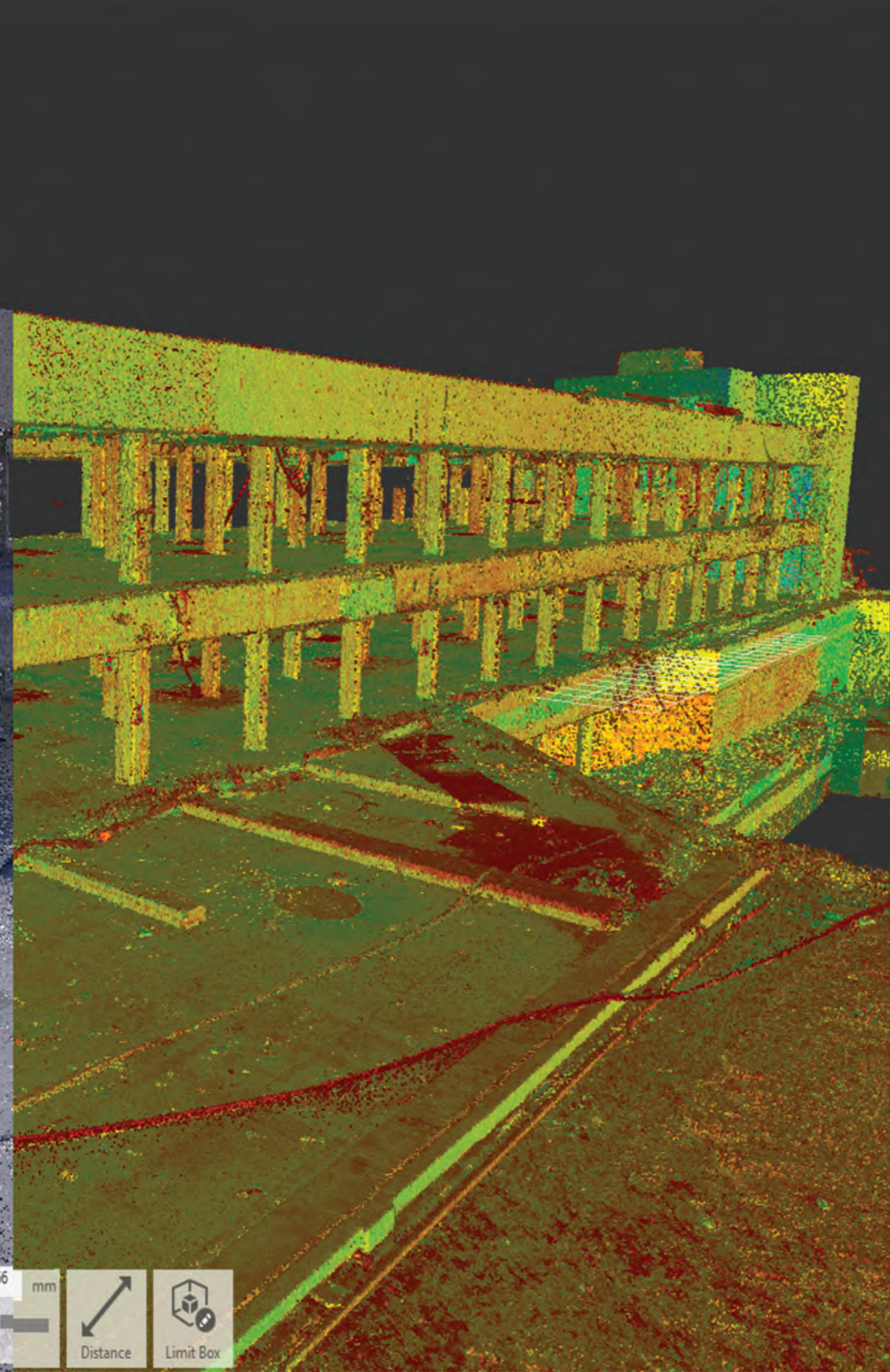
Generate shop drawings for all discipline

Area: 27,500 sqm

Central utility buildings take their location in Aqaba, looks like a simple project but the main challenge was the tunnel with 500m long which embrace most of the MEP services specially piping, bus-duct and cable ladders services.

An aerial photograph of an industrial facility, possibly a refinery or chemical plant, with a complex network of pipes, tanks, and structures. A semi-transparent point cloud visualization is overlaid on the scene, showing the 3D geometry of the structures. The image is split diagonally by a white line, with the top-left portion being a dark grey background and the bottom-right portion being white. The text 'LASER SCANNING PROJECTS' is positioned on the dark grey background.

LASER SCANNING PROJECTS



Crowne Plaza Petra Resort Project

Petra, Jordan

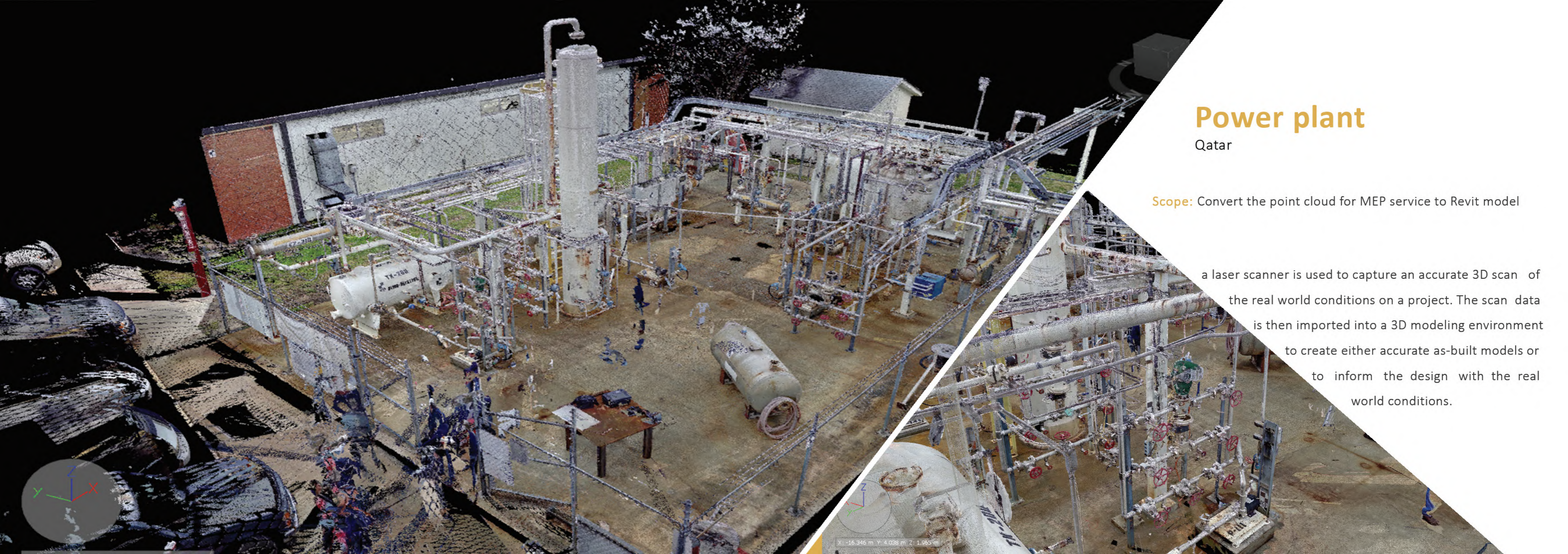
Scope: Convert the point cloud received from our client to Revit model, update the Architectural, Structural & MEP based on the existing works

Existing buildings often lack accurate documentation of the as-built condition. Laser scanners create point clouds used to create 3D building models

x: 194284.351 m y: 970312.521 m z: 1044.096 m

Plane Depth 66 mm

Plane Distance Limit Box



Power plant

Qatar

Scope: Convert the point cloud for MEP service to Revit model

a laser scanner is used to capture an accurate 3D scan of the real world conditions on a project. The scan data is then imported into a 3D modeling environment to create either accurate as-built models or to inform the design with the real world conditions.

X: -16.346 m Y: 4.038 m Z: 1.965 m



—

**When they develop a scheme, it is designed to built.
we know and trust this. That trust is vital...**

—

CONTACT US



Amman, Jordan
7th Circle



haitham@eng-bim.com
www.eng-bim.com



+962 6 40 144 91
+962 79 66 7 99 66